

# REC TWINPEAK 3 MONO BLACK SERIES

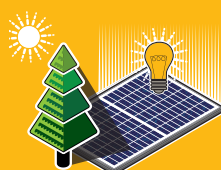
## PREMIUM SOLAR PANELS WITH SUPERIOR PERFORMANCE

REC TwinPeak 3 Mono Black Series solar panels feature an innovative design with high panel efficiency and power output, enabling customers to get the most out of the space used for the installation.

Combined with industry-leading product quality and the reliability of a strong and established European brand, REC TwinPeak 3 Mono Black panels are ideal for residential and commercial rooftops worldwide.



**MORE POWER  
OUTPUT PER M<sup>2</sup>**



**IMPROVED PERFORMANCE  
IN SHADED CONDITIONS**



**100%  
PID FREE**

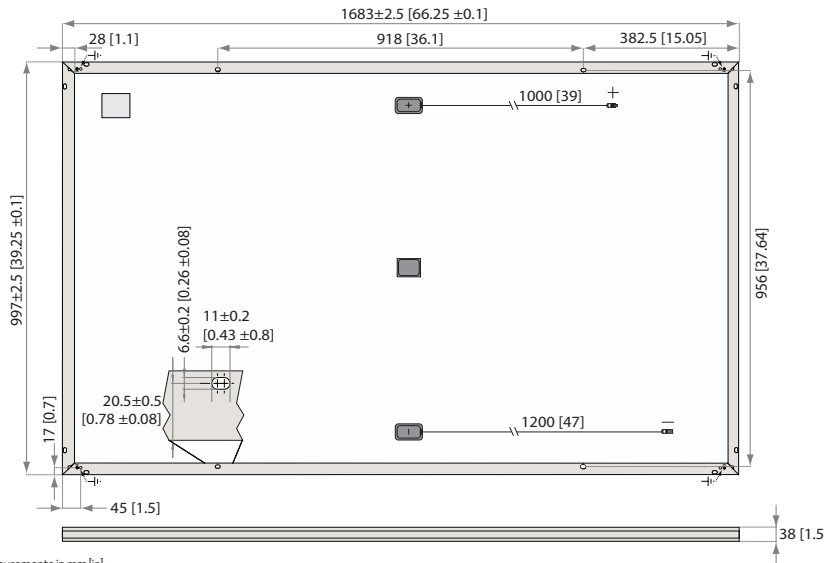


**REDUCES BALANCE OF  
SYSTEM COSTS**



**ELIGIBLE FOR**

# REC TWINPEAK 3 MONO BLACK SERIES



Measurements in mm [in]

## ELECTRICAL DATA @ STC

### Product code\*: RECxxxTP3M Black

	315	320	325	330	335
Power Output - P <sub>MAX</sub> (Wp)	315	320	325	330	335
Watt Class Sorting - (W)	-0/+5	-0/+5	-0/+5	-0/+5	-0/+5
Nominal Power Voltage - V <sub>MPP</sub> (V)	33.6	33.8	34.1	34.3	34.6
Nominal Power Current - I <sub>MPP</sub> (A)	9.40	9.50	9.54	9.62	9.69
Open Circuit Voltage - V <sub>OC</sub> (V)	38.7	39.1	39.5	39.9	40.2
Short Circuit Current - I <sub>SC</sub> (A)	10.30	10.30	10.36	10.39	10.42
Panel Efficiency (%)	18.8	19.1	19.4	19.7	20.0

Values at standard test conditions (STC: air mass AM1.5, irradiance 1000 W/m<sup>2</sup>, temperature 25°C), based on a production spread with a tolerance of P<sub>MAX</sub>, V<sub>OC</sub> & I<sub>SC</sub> ±3% within one watt class. At a low irradiance of 200 W/m<sup>2</sup> at least 95% of the STC module efficiency will be achieved.

\*Where xxx indicates the nominal power class (P<sub>MAX</sub>) at STC indicated above.

## ELECTRICAL DATA @ NMOT

### Product code\*: RECxxxTP3M Black

	235	238	242	246	250
Power Output - P <sub>MAX</sub> (Wp)	235	238	242	246	250
Nominal Power Voltage - V <sub>MPP</sub> (V)	31.3	31.5	31.7	31.9	32.2
Nominal Power Current - I <sub>MPP</sub> (A)	7.51	7.57	7.63	7.70	7.75
Open Circuit Voltage - V <sub>OC</sub> (V)	36.1	36.4	36.8	37.1	37.5
Short Circuit Current - I <sub>SC</sub> (A)	8.23	8.26	8.29	8.31	8.34

Nominal module operating temperature (NMOT: air mass AM1.5, irradiance 800 W/m<sup>2</sup>, temperature 20°C, windspeed 1 m/s).

\*Where xxx indicates the nominal power class (P<sub>MAX</sub>) at STC indicated above.

## CERTIFICATIONS



UL 1703, Fire classification: Type 2; IEC 61215, IEC 61730; ISO 9001: 2015, ISO 14001: 2004, OHSAS 18001: 2007

## WARRANTY

	Standard		REC ProTrust	
	No	Yes	Yes	Yes
Installed by an REC Certified Solar Professional	No	Yes	Yes	Yes
System Size	Any	≤25 kW		25-50 kW
Product Warranty (yrs)	20	25	25	25
Power Warranty (yrs)	25	25	25	25
Labor Warranty (yrs)	0	25	10	10
Power in Year 1	97.5%	97.5%	97.5%	97.5%
Annual Degradation	0.7%	0.7%	0.7%	0.7%
Power in Year 25	80.7%	80.7%	80.7%	80.7%

See warranty documents for details. Some conditions apply.

20.0% EFFICIENCY

20 YEAR PRODUCT WARRANTY

25 YEAR LINEAR POWER OUTPUT WARRANTY

## TEMPERATURE RATINGS

Nominal Module Operating Temperature:	44.6°C (±2°C)
Temperature coefficient of P <sub>MAX</sub> :	-0.37 %/°C
Temperature coefficient of V <sub>OC</sub> :	-0.28 %/°C
Temperature coefficient of I <sub>SC</sub> :	0.04 %/°C

## GENERAL DATA

Cells:	120 half-cut mono-Si p-type PERC cells 6 strings of 20 cells in series
Glass:	0.13" (3.2 mm) solar glass with anti-reflective surface treatment
Back sheet:	Highly resistant polyester polyolefin construction (black)
Frame:	Anodized aluminum (black)
Junction box:	3-part with 3 bypass diodes, IP67 rated 12 AWG (4 mm <sup>2</sup> ) PV wire, 39" + 47" (1.0 m + 1.2 m)
Connectors:	Stäubli MC4 PV-KBT4/PV-KST4, 12 AWG (4 mm <sup>2</sup> )

## MAXIMUM RATINGS

Operational temperature:	-40 ... +185°F (-40 ... +85°C)
Maximum system voltage:	1000 V
Design load (+): snow	3600 Pa (75.2 lbs/ft <sup>2</sup> )*
Maximum test load (+):	5400 Pa (112.8 lbs/ft <sup>2</sup> )*
Design load (-): wind	1600 Pa (33.4 lbs/ft <sup>2</sup> )*
Maximum test load (-):	2400 Pa (50 lbs/ft <sup>2</sup> )*
Max series fuse rating:	20 A
Max reverse current:	20 A

\* Calculated using a safety factor of 1.5  
\* See installation manual for mounting instructions

## MECHANICAL DATA

Dimensions:	66.3 x 39.25 x 1.5 (1683 x 997 x 38 mm)
Area:	17.98 ft <sup>2</sup> (1.68 m <sup>2</sup> )
Weight:	41.7 lbs (18.9 kg)

**Note!** Specifications subject to change without notice.

REC Group is an international pioneering solar energy company dedicated to empowering consumers with clean, affordable solar power in order to facilitate global energy transitions. Committed to quality and innovation, REC offers photovoltaic modules with leading high quality, backed by an exceptional low warranty claims rate of less than 100ppm. Founded in Norway in 1996, REC employs 2,000 people and has an annual solar panel capacity of 1.8 GW. With over 10 GW installed worldwide, REC is empowering more than 16 million people with clean solar energy. REC Group is a Bluestar Elkem company with headquarters in Norway, operational headquarters in Singapore, and regional bases in North America, Europe, and Asia-Pacific.



www.recgroup.com

Specifications subject to change without notice.

Ref: PM-DS-0716 Rev. A 05.20