



Advancing the Power of the Sun

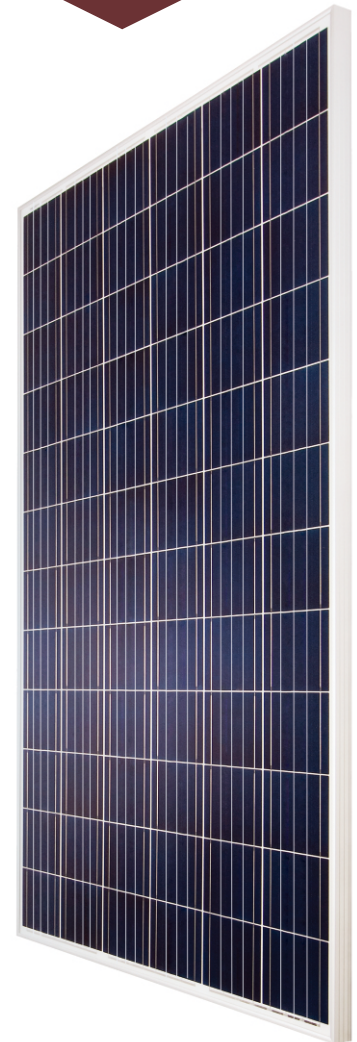
72 Cell Poly
320-340W

BVM6612P

0~+5W
Power Tolerance

17.5%
Maximum Efficiency

320-340W
Power Output Range



39.06 x 77.01 Inches
Silver Frame / White Backsheet



High Quality and Reliable Modules

- ◆ Withstand up to 5400 Pa snow load and 2400 Pa wind load
- ◆ 2 EL inspections per cell/module for defect-free consistency
- ◆ Type 1 fire-rating per UL 1703 edition 3
- ◆ High salt and ammonia resistance certified by TUV Rheinland
- ◆ 0~+5 W guaranteed positive tolerance
- ◆ Rugged design for long-term durability; passed extended reliability tests



Warranty

- ◆ 12-year product warranty
- ◆ 25-year linear power output warranty



Comprehensive Certificates for Products and Management

- ◆ UL 1703, IEC 61215, IEC 61730, CEC listed, MCS and CE
- ◆ ISO 9001 for Quality Management Systems
- ◆ ISO 14001 for Environmental Management Systems
- ◆ OHSAS 18001 Occupational Health and Safety Systems

Listed in Bloomberg New Energy Finance's tier 1 list as of 1Q 2018



2107 N 1st Street Suite 550 San Jose, CA 95131

BOVIETSOLARUSA.COM ◆ 877.253.2858 ◆ SALES@BOVIETSOLARUSA.COM

Electrical Characteristics STC

	BVM6612P-320	BVM6612P-325	BVM6612P-330	BVM6612P-335	BVM6612P-340
Maximum Power (Pmax)	320W	325W	330W	335W	340W
Maximum Power Current (Imp)	8.66A	8.75A	8.84A	8.85A	8.91A
Maximum Power Voltage (Vmp)	37.02V	37.21V	37.40V	37.92V	38.23V
Short Circuit Current (Isc)	9.02A	9.10A	9.15A	9.18A	9.25A
Open Circuit Voltage (Voc)	45.50V	45.70V	45.80V	46.3V	46.50V
Module Efficiency	16.5%	16.7%	17.0%	17.2%	17.5%
Power Tolerance	0~+5W	0~+5W	0~+5W	0~+5W	0~+5W
STC: AM1.5, Irradiance 1000W/m ² , 25°C					

Electrical Characteristics NOCT

	BVM6612P-320	BVM6612P-325	BVM6612P-330	BVM6612P-335	BVM6612P-340
Maximum Power (Pmax)	237W	241W	245W	248W	251W
Maximum Power Current (Imp)	6.93A	7.00A	7.07A	7.15A	7.22A
Maximum Power Voltage (Vmp)	34.1V	34.3V	34.5V	34.7V	34.8V
Short Circuit Current (Isc)	7.35A	7.41A	7.47A	7.55A	7.61A
Open Circuit Voltage (Voc)	42.7V	42.9V	43.0V	43.2V	43.4V
NOCT: AM1.5, Irradiance 800W/m ² , 20°C, Wind speed 1m/s					

Mechanical Characteristics

Thermal Characteristics

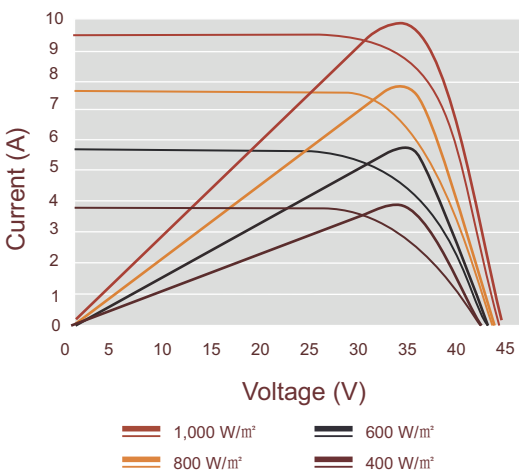
Solar Cell	Polycrystalline 6.14 x 6.14 inch, 72 (6 x 12) pcs. in series	Pmax Temperature Coefficient	-0.40%/K
Glass	High transparency, low iron, AR coated tempered glass 3.2 mm (0.13 inch)	Voc Temperature Coefficient	-0.31%/K
Frame	Anodized aluminum alloy	Isc Temperature Coefficient	+0.06%/K
Junction Box	IP67 rated, with 3 bypass diode	NOCT	113±3.6°F
Output Cable	4 mm ² (EU)/12 AWG (US), 43.30/47.244 inch		
Connector	MC4 compatible		
Dimension	77.01 x 39.06 x 1.38 inch		
Weight	49.61 lb		

Maximum Ratings

Packing Information

Operating Temperature	-40°F~185°F	Pieces per pallet	30
Maximum Series Fuse Rating	15A	Pallets per container (40HQ)	24
Maximum System Voltage	1000/1500V DC	Pieces per container (40HQ)	720
		Pallet weight/size	1620.4 lb/78.35 x 43.31 x 45.08 inch

I-V Curves at Different Irradiances (345W)
Test Temperature: 25°C



Irradiance: AM 1.5, 1,000W/m²(345W)

