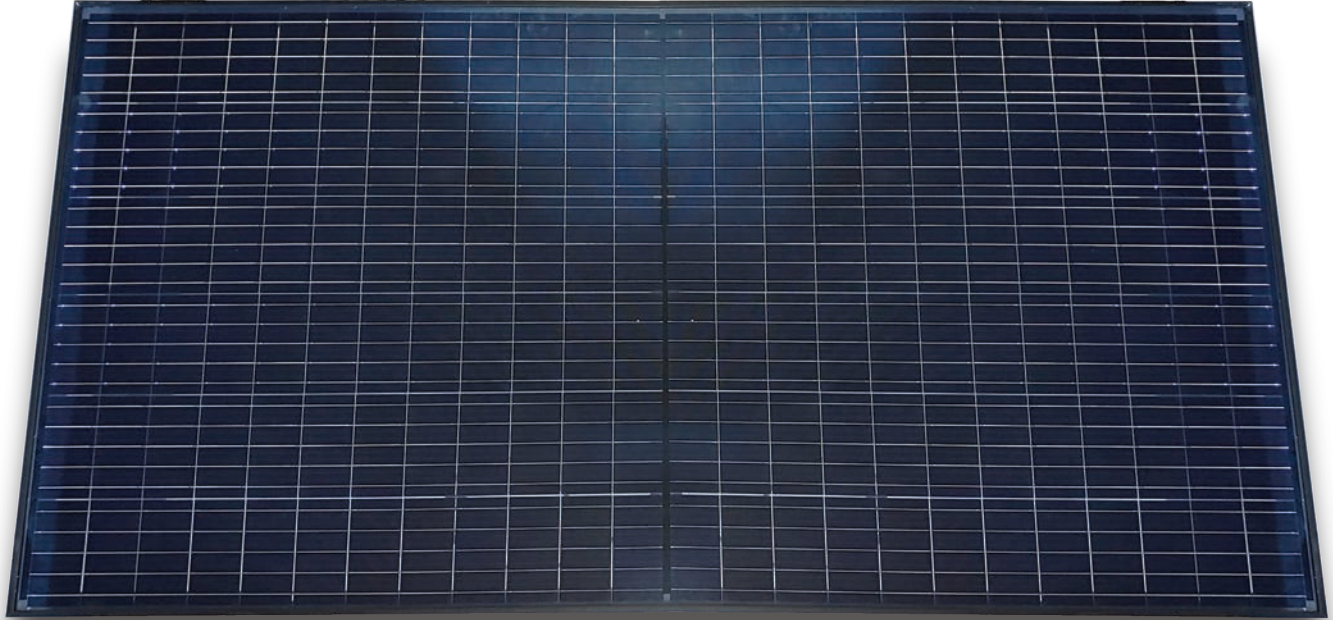



DNA-144


ALL-BLACK BI-FACIAL DESIGN
400W | 395W | 390W





Maximize Energy Production

High-efficiency, Bi-facial half-cut cell panel

 Produce up to 30% more energy with rear-side generation

 Resilient in extreme weather conditions
5400 Pa snow load
175 mph wind load

 Ideal solution for applications affected by shading

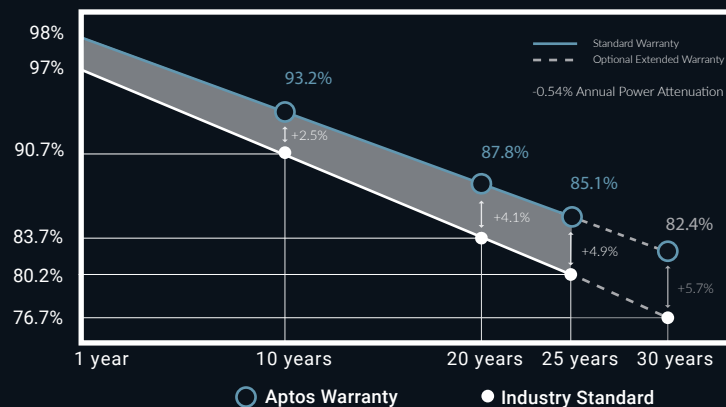
 25 year extended product warranty*
30 year extended peak power warranty*

Our DNA Half-cut Cell Series impressively combines advanced technologies to maximize performance. Produce up to 30% more energy with the bi-facial rear side generation. Our patented DNA, Dual Nano Absorber, technology allows for panel to harvest energy from all directions and operate exceptionally in high heat temperatures.

*Aptos Solar Technology solar panels come with a standard 15 product warranty and 25 year peak power warranty. Customers must select optional warranty upgrade package to qualify extended 25 year product warranty and extended 30 year peak power warranty.

www.aptosolar.com | info@aptosolar.com

Linear Peak Power Warranty

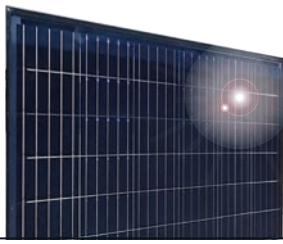


Factory Certifications



Product Certifications





DNA-144

BLACK FRAME, BLACK BACKSHEET
HIGH EFFICIENCY, BI-FACIAL HALF-CUT CELL PANEL



ELECTRICAL SPECIFICATIONS (+3%/0%)

	DNA-144-BF23-390W	DNA-144-MB23-395W	DNA-144-BF23-400W
STCrated output P_{mpp} (W)	390	395	400
Module Efficiency	19.28%	19.52%	19.77%
Open Circuit Voltage V_{oc} (V)	48.17	48.26	48.35
Short Circuit Current I_{sc} (A)	10.14	10.23	10.32
Rated Voltage V_{mmp} (V)	39.65	39.83	40.01
Rated Current I_{mmp} (A)	9.84	9.92	10.00

Standard Test Conditions for front-face of panel:
1000 W/m², 25 °C, measurement uncertainty ≤3%

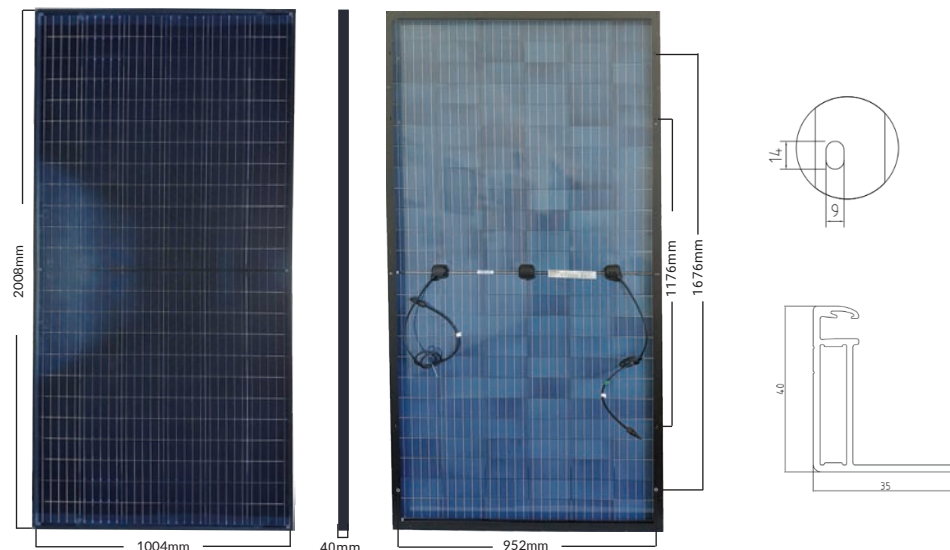
TEMPERATURE COEFFICIENTS

Temperature Coefficients P_{mpp}	-0.36%/°C
Temperature Coefficients I_{sc}	+0.046%/°C
Temperature Coefficients V_{oc}	-0.306%/°C
Normal Operating Cell Temperature (NOCT)	45°C

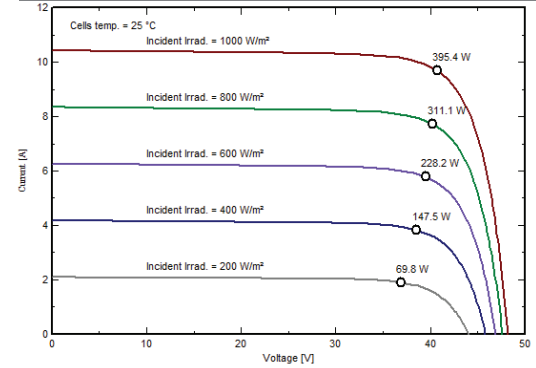
TEST OPERATING CONDITIONS

Maximum Series Fuse	20A
Maximum System Voltage	1,500 VDC (UL&IEC)
Maximum Load Capacity (Per UL1703)	5,400PA Snow Load 175mph Wind Rating
Fire Performance Class	Class C/Type 1

MODULE DIMENSIONS



I-V CURVE



BI-FACIAL OUTPUT

P_{mpp} (W) at STC	390	395	400
Bi-facial Boost 5%	404	409	414
Bi-facial Boost 10%	418	423	428
Bi-facial Boost 15%	430	436	442

MECHANICAL PROPERTIES

Cell Type	Monocrystalline
Glass	Low Iron, Tempered
Frame	Anodized Aluminum Alloy
Junction Box	IP67
Dimension	2008 x 1008 x 40mm
Output Cable	4mm ² (EU)12AWG, 39.37in(1200mm)
Weight	51.4lbs.(23.3kg)
Cable Length	1200mm

PACKAGING CONFIGURATION

Number of Modules per Pallet	27
Number of Pallets per 40ft HQ Container	22
Pallet Dimensions (mm)	2050 X 1140 X 1140
Pallet weight (kg)	680
Container weight (kg)	14960

Aptos Solar Technology reserves the right to make specification changes without notice

3140 De La Cruz Blvd., Ste. 200
Santa Clara, CA 95054
www.aptossolar.com | info@aptossolar.com

DNA-144-BF23-XXXW
RESIDENTIAL | COMMERCIAL | UTILITY