

LASOLAR

HALF CELL

LS530-LS550BF

144 CELL

MONOCRYSTALLINE MODULE

530W-550W

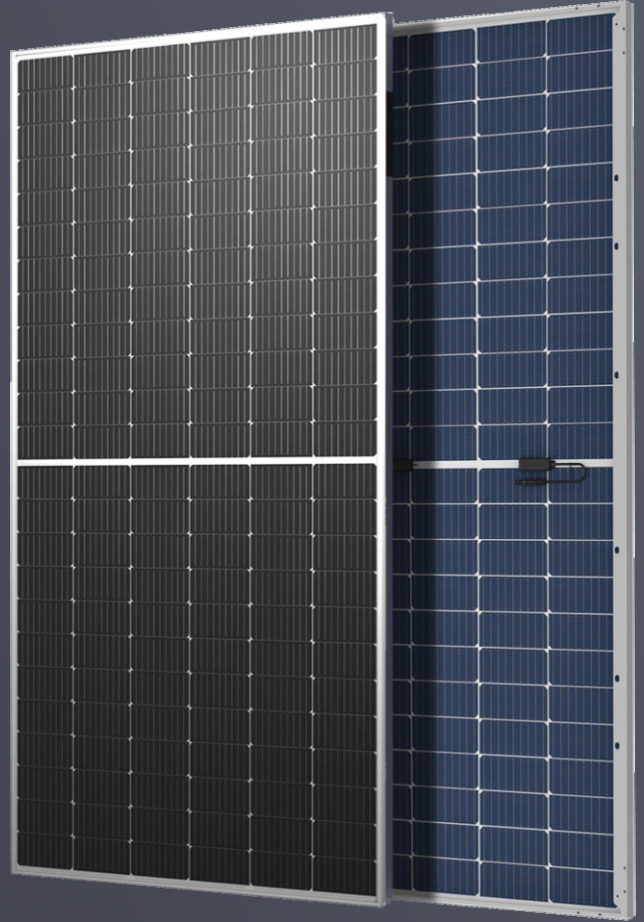
POWER OUTPUT RANGE

21.28%

MAXIMUM EFFICIENCY

0 ± 3%

POSITIVE POWER TOLERANCE



DESIGNED IN USA
MADE IN ARMENIA

30 YEAR WARRANTY

Main Characteristics



Mismatch loss reduction for maximum efficiency



Reduced power loss by minimizing the effect of shadow shading



Competitive low light performance



Two EL tests to ensure the best quality

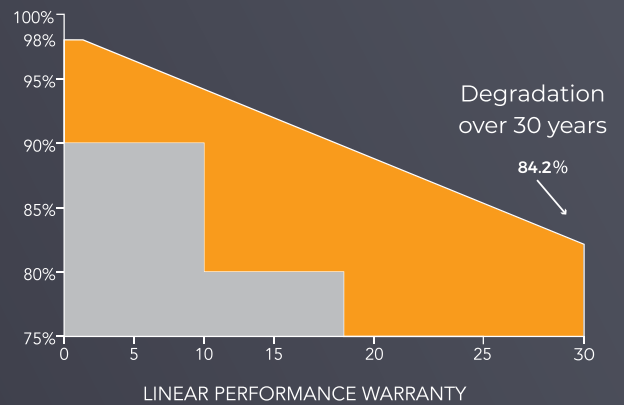


BOS's reduced and increased ROI is ideal for commercial and industrial scale projects



Proven reliability through PVEL's rigorous weatherproofing tests:

- Dust, acid, and alkali resistance, hail test
- 2400Pa wind pressure and 5400Pa snow pressure
- Anti-PID



QUALIFICATIONS AND CERTIFICATES

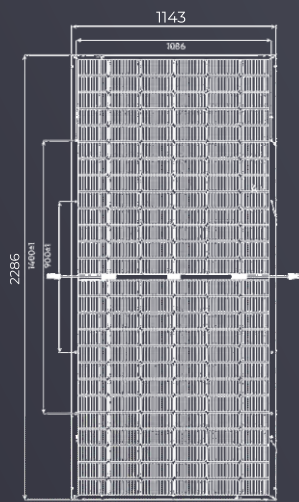


UL/IEC61215, UL/IEC61730
ANTI-PID IEC TS 62804-1:2015
ISO9001, ISO14001, ISO45001



Electrical Characteristics

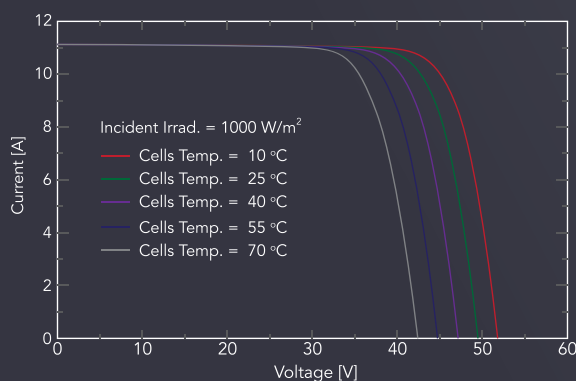
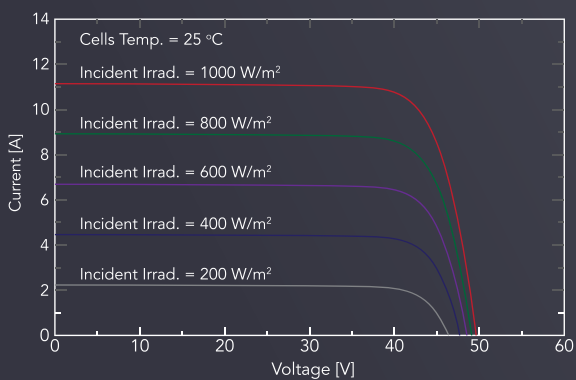
Component Model	LS530BF	LS535BF	LS540BF	LS545BF	LS550BF
Maximum Power (Pmax)	STC 530W	STC 535W	STC 540W	STC 545W	STC 550W
Module Efficiency	20.56%	20.76%	20.95%	21.14%	21.28%
Open Circuit Voltage (Voc)	49.3V	49.4V	49.5V	49.6V	49.7V
Short Circuit Current (Isc)	13.6A	13.7A	13.81A	13.92A	14.02A
Maximum Power Voltage (Vmp)	41.03V	41.29V	41.55V	41.81V	42.07V
Maximum Power Current (Imp)	12.92A	12.96A	13A	13.04A	13.08A
Power Tolerance	±3%				
Maximum System Voltage	1500V				
Maximum Rated Fuse Current	35A				
STC: Irradiance	1000 W/m ²				
Module Temperature	25 °C				



Temperature Characteristics

Maximum Power Temperature Coefficient (TC Pmax)	-0.35 % / °C
Temperature Coefficient of Open Circuit Voltage (TC Voc)	-0.27 % / °C
Temperature Coefficient of Short Circuit Current (TC Isc)	0.05 % / °C
Working Temperature	-40 ~ +85 °C
Nominal Operating Cell Temperature (NOCT)	46 ± 2 °C

Structural Characteristics



Module Size	90x45x1.5in
Weight	57lbs (26.5kg)
Cell type	Mono PERC 7.1x3.5 in (144 pieces)
Glass	3.2mm tempered Ar coated
Frame	Anodized aluminum alloy
Junction Box	IP68, 3 diodes
Mechanical Load	front 5400Pa / back 2400Pa
Connector	MC4
Wire Type	compatible PV wire
Fire Performance	Type 1
Protection Class	Class II (Classified as per IEC 61140)

Packing Method

Container	40' HQ
Quantity Per Pallet	30
Number of Pallets Per Container	20
Quantity Per Container	600