



SIL-310 ML



HIGH EFFICIENCY PREMIUM MONO-PERC PV MODULE



CHUBB®

* Chubb provides error and omission insurance to Silfab Solar Inc.

INDUSTRY LEADING WARRANTY

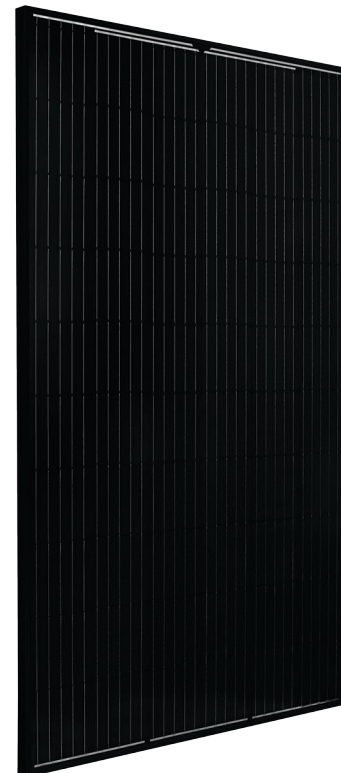
All our products include an industry leading 25-year product workmanship and 30-year performance warranty.

35+ YEARS OF SOLAR INNOVATION

Leveraging over 35+ years of worldwide experience in the solar industry, Silfab is dedicated to superior manufacturing processes and innovations such as Bifacial and Back Contact technologies, to ensure our partners have the latest in solar innovation.

NORTH AMERICAN QUALITY

Silfab is the leading automated solar module manufacturer in North America. Utilizing premium quality materials and strict quality control management to deliver the highest efficiency, premium quality PV modules.



■ BAA / ARRA COMPLIANT

Silfab panels are designed and manufactured to meet Buy American Act Compliance. The US State Department, US Military and FAA have all utilized Silfab panels in their solar installations.

■ LIGHT AND DURABLE

Engineered to accommodate high wind load conditions for test loads validated up to 4000Pa uplift. The light-weight frame is exclusively designed for wide-ranging racking compatibility and durability.

■ QUALITY MATTERS

Total automation ensures strict quality controls during the entire manufacturing process at our ISO certified facilities.

■ DOMESTIC PRODUCTION

Silfab Solar manufactures PV modules in two automated locations within North America. Our 500+ North American team is ready to help our partners win the hearts and minds of customers, providing customer service and product delivery that is direct, efficient and local.

■ AESTHETICALLY PLEASING

All black sleek design, ideal for high-profile residential or commercial applications.

■ PID RESISTANT

PID Resistant due to advanced cell technology and material selection. In accordance to IEC 62804-1.

| Electrical Specifications | | SIL-310 ML mono PERC | |
|-------------------------------|----|----------------------|----------|
| Test Conditions | | STC | NOCT |
| Module Power (Pmax) | Wp | 310 | 225 |
| Maximum power voltage (Vpmax) | V | 33.05 | 30.1 |
| Maximum power current (Ipmax) | A | 9.38 | 7.5 |
| Open circuit voltage (Voc) | V | 40.25 | 37.1 |
| Short circuit current (Isc) | A | 9.93 | 8.0 |
| Module efficiency | % | 18.2 | 16.5 |
| Maximum system voltage (VDC) | V | | 1000 |
| Max series fuse rating | A | | 20 |
| Power Tolerance | Wp | | 0 to +10 |

Measurement conditions: STC 1000 W/m² • AM 1.5 • Temperature 25 °C • NOCT 800 W/m² • AM 1.5 • Measurement uncertainty ≤ 3%
 • Sun simulator calibration reference modules from Fraunhofer Institute. Electrical characteristics may vary by ±5% and power by 0 to +10W.

| Temperature Ratings | | SIL-310 ML mono PERC | |
|------------------------------|--|----------------------|--|
| Temperature Coefficient Isc | | 0.064 %/°C | |
| Temperature Coefficient Voc | | -0.28 %/°C | |
| Temperature Coefficient Pmax | | -0.36 %/°C | |
| NOCT (± 2°C) | | 45 °C | |
| Operating temperature | | -40/+85 °C | |

| Mechanical Properties and Components | | SIL-310 ML mono PERC | |
|------------------------------------------------------|----------------------------------------------------------------------------------------------------------------------------------------------|--------------------------------------------------------------------|--|
| | Metric | Imperial | |
| Module weight | 18.6 kg ±0.2 kg | 41 ±0.4 lbs | |
| Dimensions (H x L x D) | 1700 mm x 1000 mm x 38 mm | 66.9 in x 39.4 in x 1.5 in | |
| Maximum surface load (wind/snow)* | 4000 Pa rear load / 5400 Pa front load N/m ² | 83.5/112.8 lb/ft ² | |
| Hail impact resistance | Ø 25 mm at 83 km/h | Ø 1 in at 51.6 mph | |
| Cells | 60 - Si mono PERC - 5 busbar 156.75 x 156.75 mm | 60 - Si mono PERC - 5 busbar 6.17 x 6.17 Inch | |
| Glass | 3.2 mm high transmittance, tempered, DSM anti-reflective coating | 0.126 in high transmittance, tempered, DSM anti-reflective coating | |
| Cables and connectors (refer to installation manual) | 1200 mm, Ø 5.7 mm, MC4 compatible | 47.2 in, Ø 0.22 in (12AWG), MC4 compatible | |
| Backsheet | High durability, superior hydrolysis and UV resistance, multi-layer dielectric film, fluorine-free PV backsheet | | |
| Frame | Anodized Aluminum (Black) | | |
| Bypass diodes | 3 diodes-30SQ045T (45V max DC blocking voltage, 30A max forward rectified current) | | |
| Junction Box | UL 3730 Certified, IEC 62790 Certified, IP67 rated | | |
| Warranties | SIL-310 ML mono PERC | | |
| Module product workmanship warranty | 25 years** | | |
| Linear power performance guarantee | 30 years | | |
| | ≥ 97.1% end 1 st year ≥ 91.6% end 12 th year ≥ 85.1% end 25 th year ≥ 82.6% end 30 th year | | |

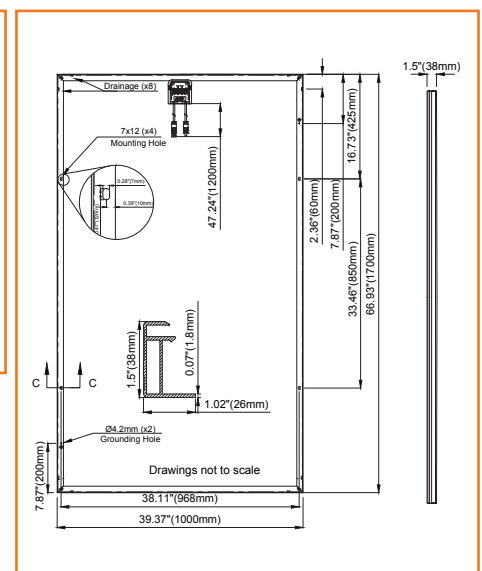
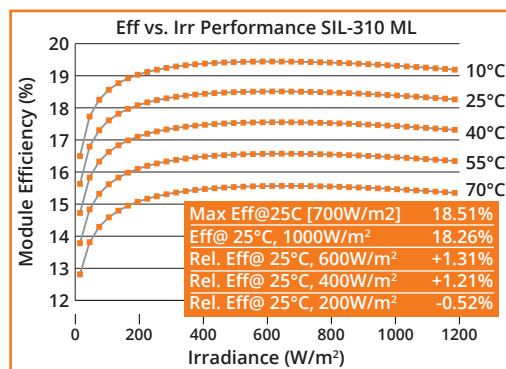
| Certifications | | SIL-310 ML mono PERC | |
|----------------|--------------------------------------------------------------------------------------------------------------------------------------|----------------------|--|
| Product | ULC ORD C1703, UL 1703, CEC listed, IEC 62716 Ammonia Corrosion; IEC61701:2011 Salt Mist Corrosion Certified, UL Fire Rating: Type 2 | | |
| Factory | ISO9001:2015 | | |

- Modules Per Pallet: 26
- Pallets Per Truck: 36
- Modules Per Truck: 936

*⚠ Warning. Read the Safety and Installation Manual for mounting specifications and before handling, installing and operating modules.

**12 year extendable to 25 years subject to registration and conditions outlined under "Warranty" at www.silfabsolar.com.

Third-party generated pan files from Fraunhofer-Institute for Solar Energy Systems ISE are available for download at: www.silfabsolar.com/downloads



Silfab Solar Inc.
 240 Courtneypark Drive East
 Mississauga ON L5T 2Y3 Canada
 Tel +1 905-255-2501 | Fax +1 905-696-0267
 info@silfabsolar.com | www.silfabsolar.com



Silfab Solar Inc.
 800 Cornwall Ave
 Bellingham WA 98225 USA
 Tel +1 360-569-4733

