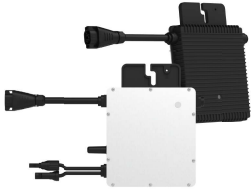


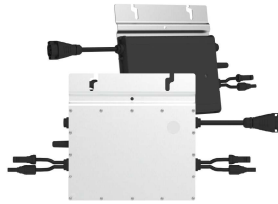
Microinverters

Single



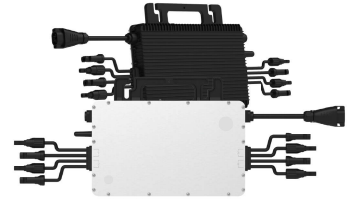
D350-M1
PV module input: 1
Output Power: 350 W
Module input: 470+ W

Dual



D700-M2
PV input: 2
Output Power: 700 W
Module input: 470 + W

Quad



D1500-M4
PV input: 4
Output Power: 1500 W
Module input: 505+ W

Duracell Home Ecosystem microinverters support fast, easy, and flexible installation with the highest power output yield per PV module.

AC trunk cable format allows any combination of single, dual, and quad microinverters to optimize even the most complex rooftop installations, up to 16 modules per branch.

Fast and efficient commissioning process can be completed remotely. Simple termination to standard junction box, main panel, or sub panel. No specialized combiner box required.

Compliant with U.S. NEC-2017 & NEC-2020 690.12 rapid shutdown and CA Rule 21. High reliability with NEMA 6 enclosure, 6000V surge protection



Microwinverters

Technical Data Solar PV Microinverters D350-M1 / D700-M2 / D1500-M4

Model	D350-M1		D700-M2		D1500-M4	
Input Data (DC)						
Number of PV inputs	1		2		4	
Module power range, typical (W)	280 to 470+		280 to 470+		300 to 505+	
Maximum input voltage (V)			60			
MPPT voltage range (V)			16-60			
Start-up voltage (V)			22			
Maximum input current (A)			11.5			
Maximum input short circuit current (A)			15			
Output Data (AC)						
Peak output power (VA)	350		700		1500	1350
Maximum continuous output power (VA)	349		696		1438	1246
Maximum continuous output current (A)	1.45	1.68	2.9	3.35	5.99	5.99
Nominal output voltage(V)	240	208	240	208	240	208
Nominal output voltage range1 (V)	211-264	183-228	211-264	183-228	211-264	183-228
Nominal frequency/range1 (Hz)	60/55-65					
Power factor (adjustable)	>0.99 default (0.8 lead to 0.8 lag)					
Total harmonic distortion	<3%					
Maximum units per branch2 (10 AWG)	16	14	8	7	4	4
Efficiency						
CEC peak efficiency (%)			96.7			
CEC weighted efficiency (%)			96.5			
Nominal MPPT efficiency (%)			99.8			
Nighttime power consumption (mW)			<50			
Mechanical Data						
Ambient temperature range (°C)			-40 to +65			
Dimensions (W x H x D) mm	182 x 164 x 29.5		250 x 170 x 28		280 x 176 x 33	
Weight (kg)	1.75		2.6		3.35	
Enclosure rating	Outdoor NEMA 6					
Cooling	Natural convection - no fans					
Features						
Communication	2.4 GHz proprietary RF (Nordic)					
Monitoring	Yes					
Warranty	Up to 25 years					
Compliance	UL 1741, IEEE 1547, UL 1741 SA (240 Vac), CA Rule 21 (240 Vac), CSA C22.2 No. 107.1-16, FCC Part 15B, FCC Part 15C					
PV Rapid Shutdown	Conforms with NEC-2017 and NEC-2020 Article 690.12 and CEC-2021 Sec 64-218 Rapid Shutdown of PV Systems					

*1. Nominal voltage/frequency range can vary depending on local requirements.

*2. Refer to local requirements for exact number of microinverters per branch.