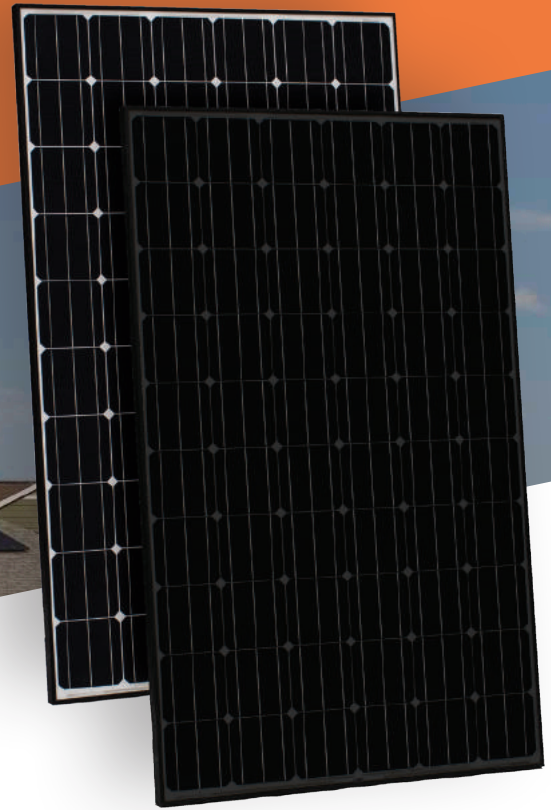


CertainTeed Solar

# CT SERIES 60 CELL SOLAR MODULES



## Monocrystalline Type

- CT295MXX-03
- CT300MXX-03
- CT305MXX-03
- CT310MXX-03

XX denotes frame and backsheet color respectively.  
0 = White or Silver, 1 = Black



## Features and Benefits

### High Quality / High Power

- Up to 310W Black Backsheet
- UL listed (UL 1703)
- Output power tolerance +4.99/-0W
- PID Free

### Limited Warranty\*

- 10-year product warranty
- 25-year linear power output warranty

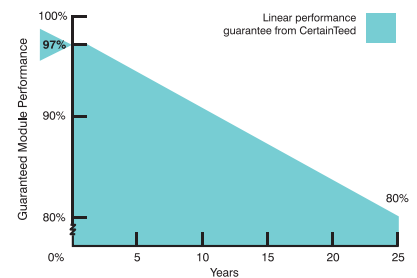
\*See CertainTeed's limited warranty for details



See reverse for  
product specifications



## Power Output Warranty



**CertainTeed**  
SAINT-GOBAIN

## Electrical Characteristics

		295W	300W	305W	310W
Nominal Output (Pmpp)	W	295	300	305	310
Voltage at Pmax (Vmpp)	V	32.1	32.5	32.9	33.3
Current at Pmax (Impp)	A	9.2	9.2	9.3	9.3
Open Circuit Voltage (Voc)	V	39.9	40.3	40.7	41.1
Short Circuit Current (Isc)	A	9.7	9.8	9.8	9.8
Output Tolerance	W	+4.99 / -0			
No. of Cells & Connections		60 in series with 3 bypass diodes			
Maximum Series Fuse Rating		20A	20A	20A	20A
Cell Type		6" Monocrystalline			
Module Efficiency	%	17.7%	18.0%	18.3%	18.6%
Temperature Coefficient of Pmpp	%/C	-0.37			
Temperature Coefficient of Voc	%/C	-0.28			
Temperature Coefficient of Isc	%/C	0.05			

## Mechanical Characteristics

Laminate	Glass: 3.2 high transmission, tempered, anti-reflective Encapsulant: EVA Backsheet: Weatherproof film (Black or White)
Frame	Anodized aluminum (Black)
Junction Box	IP68, IEC certified, UL listed
Output Cables	4 mm <sup>2</sup> (12AWG) PV Wire, Length 1.0m (39.4")
Connectors	Polarized MC4 compatible Weatherproof, IEC certified, UL listed
Weight	18.9 kg (41.7 lbs)

## Operating Conditions

Nominal Operating Cell Temp.	46° C + 2
Operating Temperature	-40 to 85° C
Maximum System Voltage	1500v
Fire Performance	Type 1
Maximum Wind Load	50 lbs/ft <sup>2</sup> (2400 Pa)
Maximum Snow Load	112 lbs/ft <sup>2</sup> (5400 Pa)

## Dimensions

