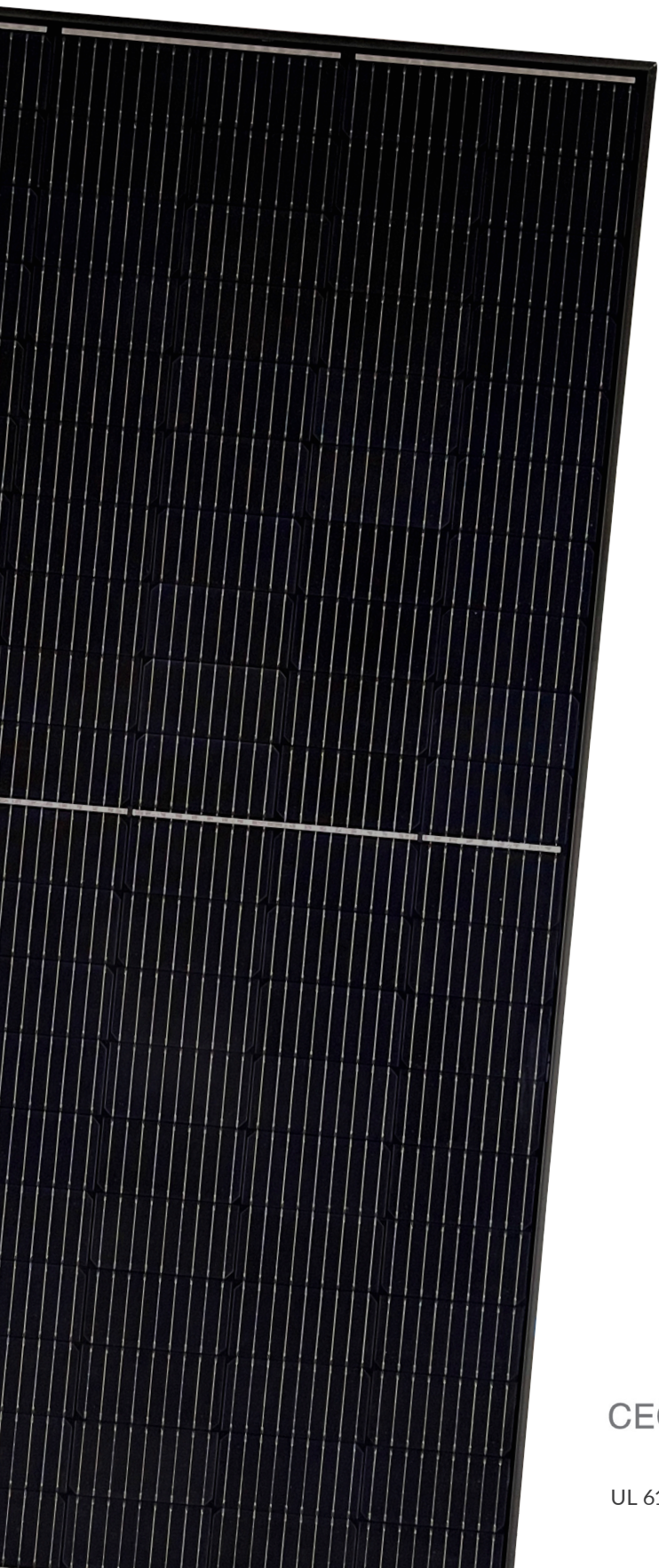




120BB 365W HC Series

mSolar 9BB Half-Cell Black
Monocrystalline PERC PV Module



Excellent efficiency

9 busbar technology increases power by decreasing the distance between busbars and the finger grid line



Improved weak illumination response

More power output even in lower light conditions such as overcast days or off-peak sunlight hours



Anti PID

Panels rigorously tested to limit power degradation caused by 'stray' currents



High wind and snow resistance

5,400Pa Snow Load
2,400Pa Wind Load



25-year warranty

M Solar modules are guaranteed to retain at least 84.3% of the initial power output



Appealing Aesthetics

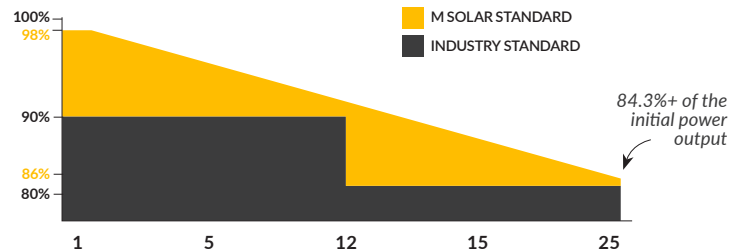
Fully black module creates a sleek, uniform array



25-year product warranty, 25-year output warranty



0.5% annual degradation over 25 years



CEC



UL 61730 | IEC 61215 | IEC 61730

www.msolarenergy.us

120BB 365W HC Series

msolar 9BB Half-Cell mBlack
Monocrystalline PERC PV Module

Electrical Characteristics | STC*

Module Type	TXS6-365120BB	TXS6-370120BB	TXS6-365120BB
Nominal Power Watt Pmax (W)*	365	370	375
Power Output Tolerance Pmax (%)	0~+3	0~+3	0~+3
Maximum Power Voltage Vmp (V)	34.0	34.20	34.40
Maximum Power Current Imp (A)	10.74	10.82	10.91
Open Circuit Voltage (V)	40.8	41.00	41.20
Short Circuit Current Isc (A)	11.33	11.42	11.51
Module Efficiency (%)	20.04	20.31	20.59

*STC (Standard Test Condition): Irradiance 1000W/m², Module Temperature 25°C, AM 1.5
*Measuring tolerance: ±

Electrical Characteristics | NMOT*

Maximum Power Watt Pmax (Wp)	272.10	275.80	279.80
Maximum Power Voltage Vmpp (V)	31.60	31.70	31.90
Maximum Power Current Imp (A)	8.62	8.69	8.76
Open Circuit Voltage Voc (V)	38.00	38.20	38.40
Short Circuit Current Isc (A)	9.15	9.22	9.29

*NMOT(Nominal module operating temperature): Irradiance 800W/m². Ambient Temperature 20°C, AM 1.5, Wind Speed 1m/s

Mechanical Data

Solar Cells	Mono PERC
Cells orientation	120 (6x20)
Module dimension	1,755x1,038x35mm (with frame)
Weight	20.5kg
Glass	3.2mm, High Transmission, AR Coated Tempered Glass
Junction Box	IP 68, 3 Diodes
Cables	4mm ² ; 1,200mm
Connectors	MC4-compatible

Temperature Ratings

NMOT	44°C±2°C
Temperature coefficient of Pmax	-0.36%/°C
Temperature coefficient of Voc	-0.29%/°C
Temperature coefficient of Isc	0.05%/°C

Working Conditions

Maximum System Voltage	1500 V DC
Operating Temperature	-40°C ~+85°C
Maximum Series Fuse	20 A
Maximum Load (Snow/Wind)	5,400Pa / 2,400Pa

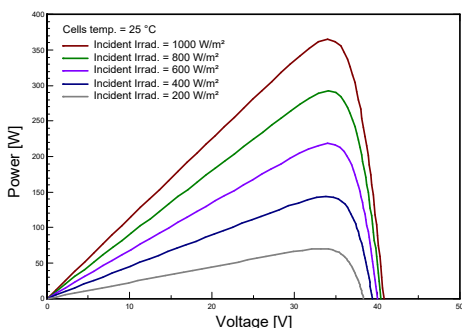
Fire Rating Type 1**

*Do not connect Fuse in Combiner Box with two or more strings in parallel connection
*Remark: Electrical data in this catalog do not refer to a single module and they are not part

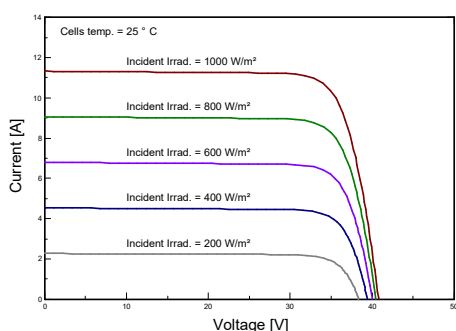
of the offer. They only serve for comparison among different module types.
**Please note, the 'Fire Class' Rating is designated for the full installed PV system,

which includes, but is not limited to, the module, the type of mounting used, pitch and roof composition.

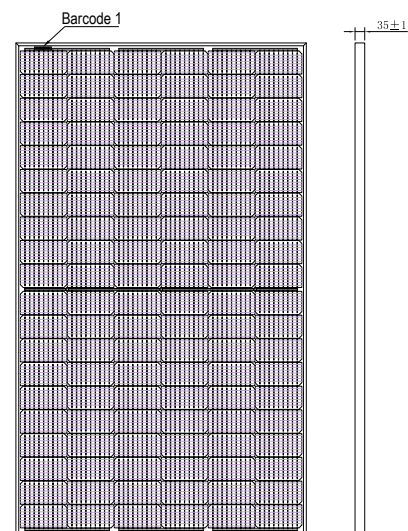
P-V Curves of PV Module (365W)



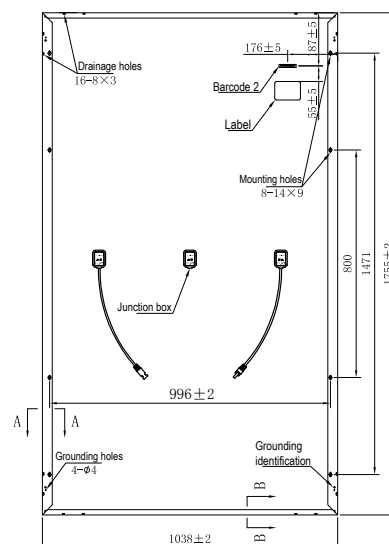
I-V Curves of PV Module (365W)



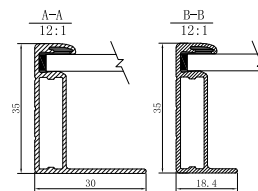
Dimensions (MM)



Front View



Back View



Packaging Details

31 Panels per pallet	Pallet Stack Weight	Truck Weight
26 Pallets per truck	2,934 lbs. (1,331 kg)	38,142 lbs. (17,301 kg)